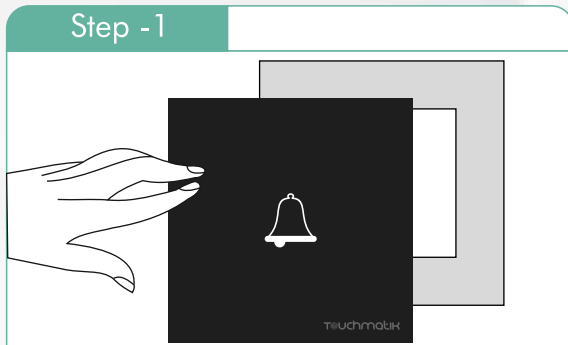
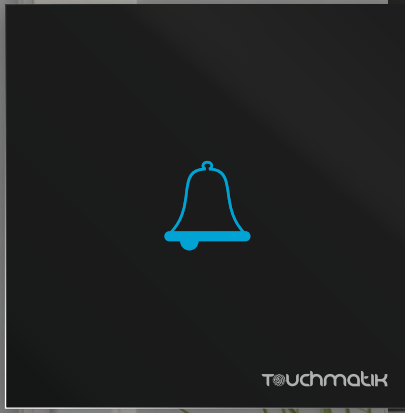
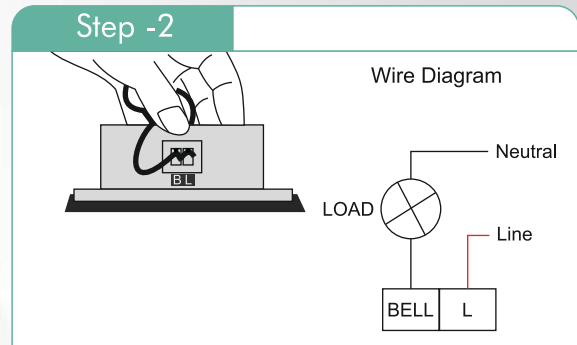


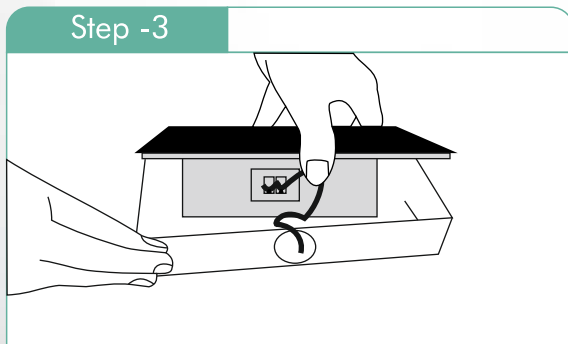
## DOOR BELL



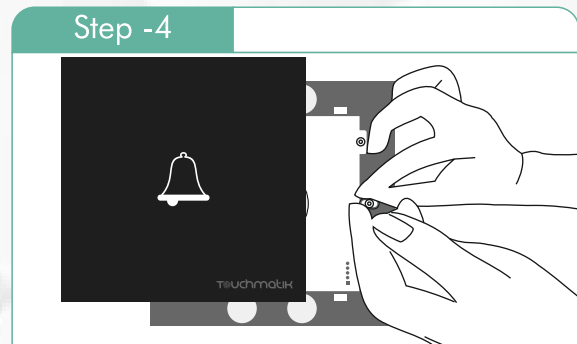
Remove the top Glass plate by just a pull force from the switchboard.



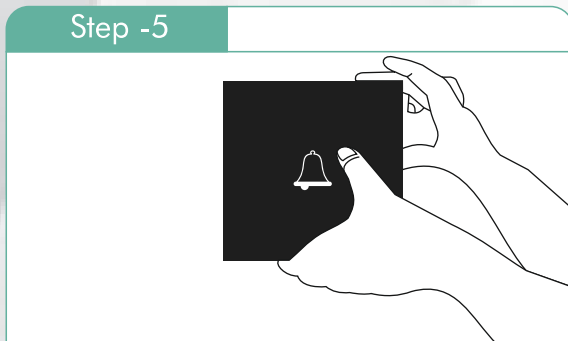
Connect the load wires as per the Stickers mentioned on the box and the wire diagram shown in the above picture. Ensure that there are no wire strands protruding outside the connectors.



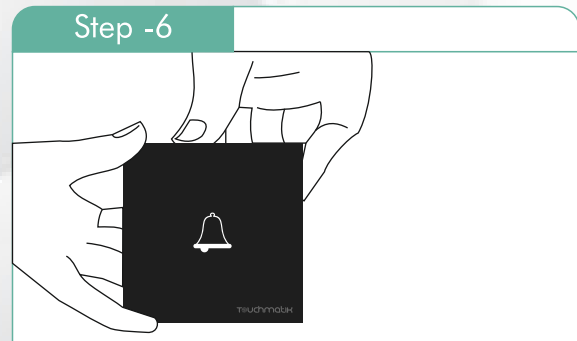
Align the loose cables in the concealed box properly. Place the switch board over the conceal box.



Screw fit the switch board to the conceal box (use the screws provided along with the switch board.) Ensure that there is no stress on the load wire connections and the box fitment.



Press fit the top Glass plate to the switchboard.



Ensure proper fitment of the switch board vertically and horizontally. Check the whole switch board functionally.